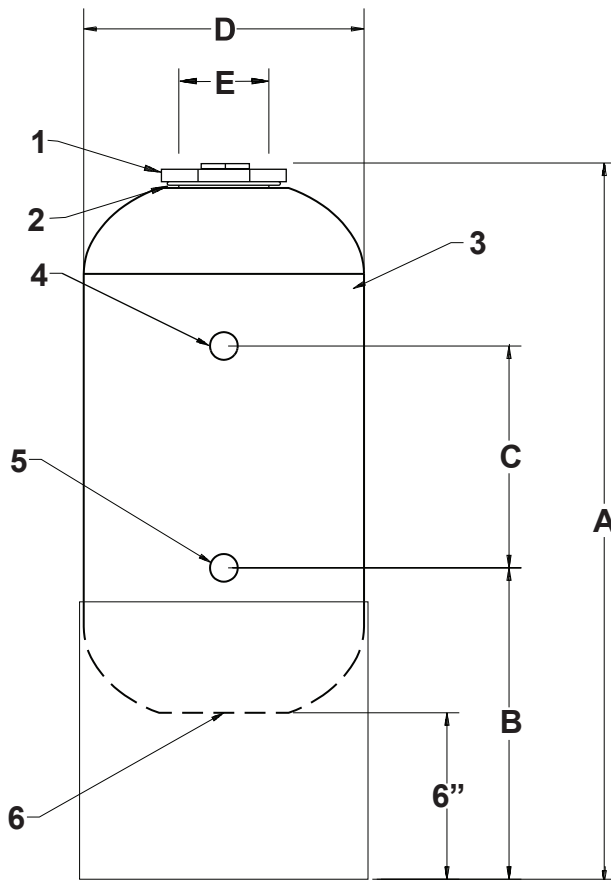


J.L. WINGERT CO.

Specification Sheet **DOME BOTTOM BROMINE FEEDERS MODEL FRP-DB-[]**

SS030014.D 01/17



SPECIFICATIONS

KEY	PART	DESCRIPTION
1	3206	CLOSURE: 4" CPVC closure (O-ring included), 1" PVC plug
2		O-RING: EPDM
3		BODY: Fiberglass
4		OUTLET: 3/4" FNPT
5		INLET: 3/4" FNPT
6		DRAIN: 1" FNPT
MAX. PRESSURE		150 PSI (10.3 BAR)
MAX. TEMPERATURE		120 °F (66 °C)

VOLUME (FILL CAPACITY)

MODEL	GALLONS	LITERS	VOLUME
FRP-DB-5	5.1	19.3	1,178 in ³
FRP-DB-12	12.1	45.8	2,795 in ³
FRP-DB-16	16.7	63	3,857 in ³

DIMENSIONS

KEY	FRP-DB-5	FRP-DB-12	FRP-DB-16
A	25 7/8"	46 3/4"	60 3/4"
B	11 1/4"	11 1/4"	11 1/4"
C	8"	28 7/8"	43"
D	10 1/8"	10 1/8"	10 1/8"
E	4"	4"	4"
WEIGHT	11 lbs. approx.	17 lbs. approx.	21 lbs. approx.
SHIPPING DIMENSIONS	10 1/2" x 10 1/2" x 26"	10 1/2" x 10 1/2" x 47"	10 1/2" x 10 1/2" x 61"

Note: All dimensions are +/- 1/8". All weights are approximate. All dimensions are subject to change without notice.

MANUFACTURING: Mixers, Bypass Feeders, Filter Feeders, Bromine Feeders, Sample Coolers, Sludge Traps, Separators, Separator Systems, Tank Stands, Tank Package Systems, Glycol Feed Systems, Coupon Racks, Control Stations, NEMA Enclosures, Custom Packaged Systems and Specialty Welding

P.O. Box 6207 | Garden Grove, CA 92846-6207 / 11800 Monarch St. | Garden Grove, CA 92841-2113 | Phone (714) 379-5519 | Fax (714) 379-5549
 Northern California Region | Phone (510) 487-5310 | Southwest Region | Phone (602) 470-1015 | Email: customerservice@jllwingert.com

www.jllwingert.com